



Porch

Bed 4

Entry

Bed 2

Bed 3

Kitchen

Dining

Family

Media

Bed 1

Bath

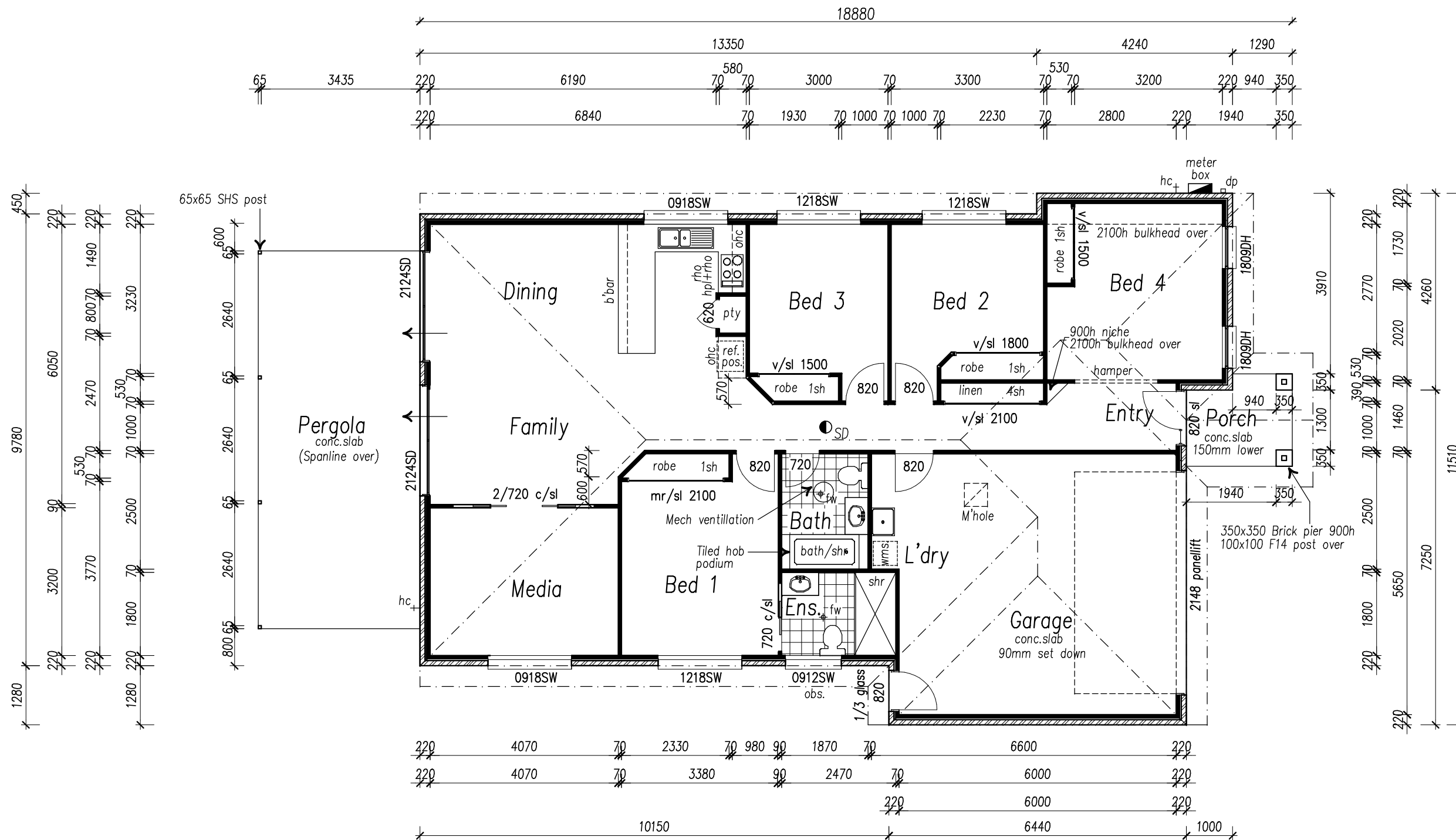
Ents

L'dry

Garage

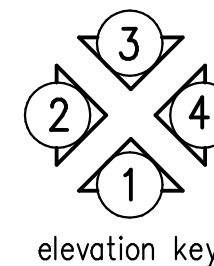
Pergola

● INDICATES SMOKE ALARM IN ACCORDANCE WITH AS 3786 CONNECTED TO CONSUMER MAINS POWER AND WITH BATTERY BACKUP.



**Ground Floor Plan.**

G.F.Living area: 176.2 sqm  
 Porch area: 4.2 sqm  
 Pergola area: 28.6 sqm  
 TOTAL AREA: 209.0 sqm



**PROVINCIAL BUILDING**

U39. No. 120. BLOOMFIELD ST.  
 CLEVELAND 4163.  
 PH.: 3286 7762  
 FAX: 3286 1690

DRAWN: OTTO  
 DATE: 23/4/10  
 SCALE: 1:100

N2

CLIENT:

**THE LOUISIANA**

Copyright © 2010 Provincial Building  
 All rights reserved

This drawing may not be reproduced or transmitted in any form or by any means in part or in whole, without the prior written permission of Provincial Building

JOB No. 005-4B

Sheet No. 2. of 6

**AMENDMENTS TO CONTRACT**

DATE	REMARKS
A	
B	
C	
D	
E	
F	

**KOSCAD**  
 AUSTRALIA PTY LTD  
 47. Reuben St.  
 Cornubia  
 Phone : 3806 0800  
 0409 740 340  
 Fax : 3806 0811  
 BSA lic. No. 657045