



Pergola

Dining

Kitchen

Family

Bed 1

Bath

Ens.

Garage

L'dry

Bed 3

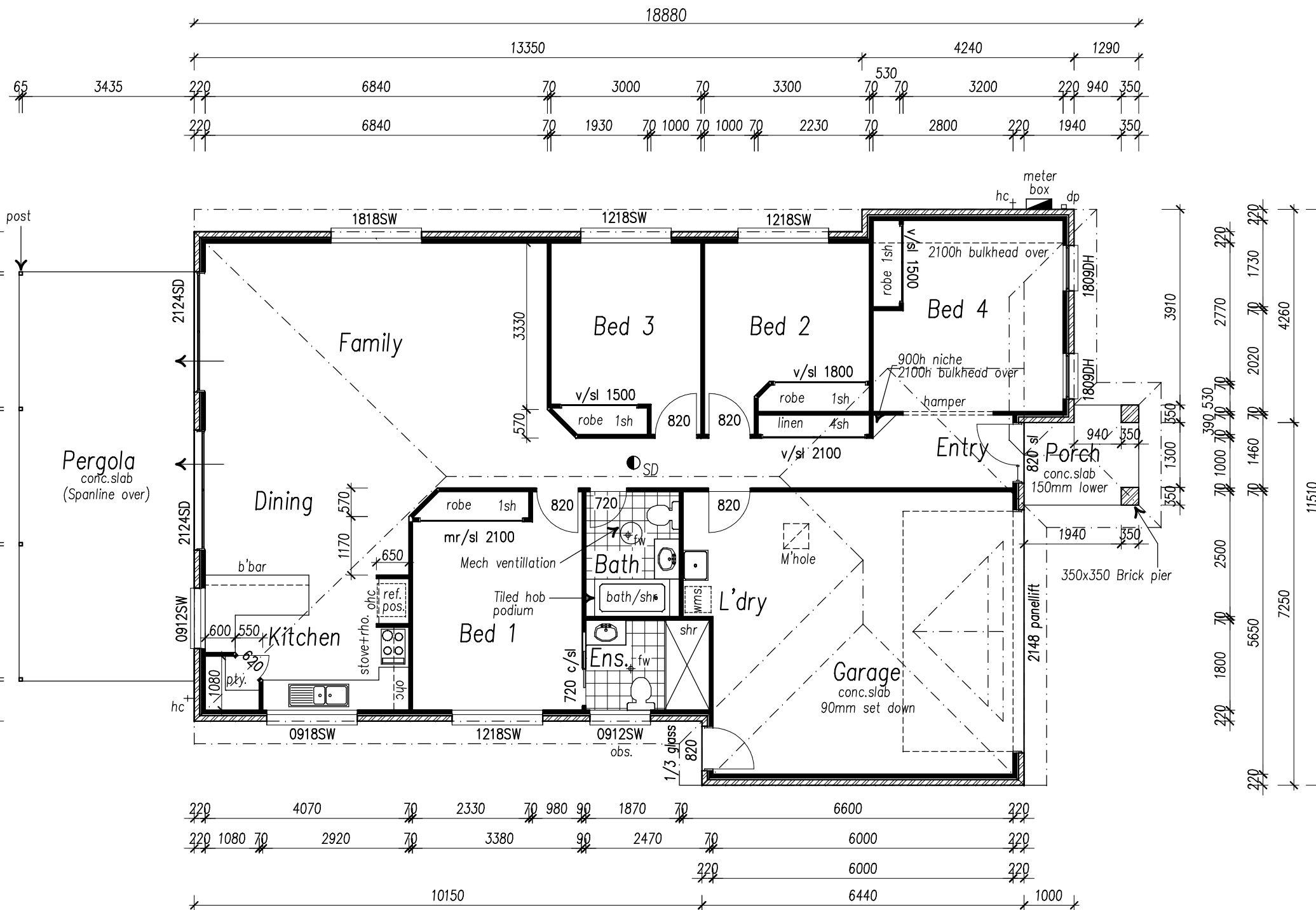
Bed 2

Entry

Bed 4

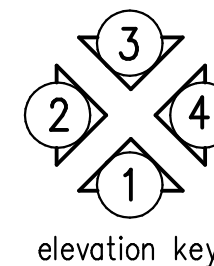
Porch

● INDICATES SMOKE ALARM IN ACCORDANCE WITH AS 3786 CONNECTED TO CONSUMER MAINS POWER AND WITH BATTERY BACKUP.



Ground Floor Plan.

G.F.Living area: 176.2 sqm
 Porch area: 4.2 sqm
 Pergola area: 28.6 sqm
 TOTAL AREA: 209.0sqm



PROVINCIAL BUILDING

U39. No. 120. BLOOMFIELD ST.
 CLEVELAND 4163.
 PH.: 3286 7762
 FAX: 3286 1690

DRAWN: OTTO
 DATE: 23/4/10
 SCALE: 1:100

N2

CLIENT:

THE DANIELA

Copyright © 2010 Provincial Building
 All rights reserved

This drawing may not be reproduced or transmitted in any form or by any means in part or in whole, without the prior written permission of Provincial Building

JOB No. 005-4A

Sheet No. 2. of 6

AMENDMENTS TO CONTRACT

DATE	REMARKS
A	
B	
C	
D	
E	
F	

KOSCAD
 AUSTRALIA PTY LTD
 47. Reuben St.
 Cornubia
 Phone : 3806 0800
 0409 740 340
 Fax : 3806 0811
 BSA lic. No. 657045